

International Journal of Emerging Electric Power Systems

Volume 1, Issue 1

2004

Article 1

Transmission Congestion Management and Pricing in Simple Auction Electricity Markets

Claudio A. Canizares*

Hong Chen[†]

Federico Milano[‡]

Ajit Singh**

*University of Waterloo, ccanizar@uwaterloo.ca

[†]New England ISO, hchen@iso-ne.com

[‡]Univeristy of Castilla la Mancha, fmilano@ind-cr.uclm.es

**University of Waterloo, asingh@etude.uwaterloo.ca

Copyright ©2004 by the authors. All rights reserved. No part of this publication may be reproduced, stored in a retrieval system, or transmitted, in any form or by any means, electronic, mechanical, photocopying, recording, or otherwise, without the prior written permission of the publisher, bepress. *International Journal of Emerging Electric Power Systems* is produced by The Berkeley Electronic Press (bepress). <http://www.bepress.com/ijeeps>

Transmission Congestion Management and Pricing in Simple Auction Electricity Markets

Claudio A. Canizares, Hong Chen, Federico Milano, and Ajit Singh

Abstract

This paper presents a novel technique to analyze, manage and price transmission congestion in electricity markets based on a simple auction mechanism. The proposed technique is basically an iterative rescheduling algorithm, relying on an “on-line” evaluation of the transmission system congestion, as defined by a System Security Index (SSI), and associated sensitivities, which are all computed based on formulas that account for voltage stability constraints as well as thermal and bus voltage limits. The methodology is tested using a 3-area test system, a 6-bus test system with both demand-side bidding and inelastic demand, as well as a 129-bus model of the Italian High Voltage transmission system with demand-side bidding. The results obtained for these test systems with the proposed technique are compared with similar results obtained from an optimization-based method.

KEYWORDS: electricity markets, electricity pricing, simple auction, transmission system congestion, voltage stability

1 Introduction

The widespread and rapid deregulation and/or privatization of electricity markets throughout the world has led to the implementation of a variety of competitive market structures that could be categorized into three main groups [Wilson, 1999, Ilic et al., 1998, Sheblé, 1999], namely, pool or centralized markets (e.g. the “old” U.K. market, Chile, and PJM), simple auction or decentralized markets (e.g. Spain and the former California markets), and spot pricing or hybrid markets (e.g. New Zealand, Ontario, and the current U.K. and New England markets).

Centralized markets can be basically viewed as unit commitment problems where a “central” broker/operator takes care of “dispatching” the market participants based on their bids, while accounting somewhat for the transmission system and network security [Madrigal-Martínez, 2000]. Decentralized markets, on the other hand, are considered “transparent” markets that are run by a central broker or market operator, and where only the participants’ bids are used to determine a market clearing price using a simple auction mechanism, without considering system constraints; the results of this auction are passed on to a system operator who may approve, modify and/or reject the transactions, depending on the market rules and system constraints [Sheblé, 1999]. Finally, hybrid markets are based on spot pricing techniques and associated Optimal Power Flow (OPF) methods [Schweppe et al., 1988], so that price signals can be given to all market participants from an optimal system operation perspective through the use of “nodal” or “locational” marginal prices (LMP) [Xie et al., 2000].

The costs associated with ensuring transaction feasibility in the various types of markets is typically referred to as Transaction Security Cost (TSC), and is an important component of unbundled transaction costs [Willis et al., 1996]. From an economic point of view, accurate costs are needed to provide the correct price signals to foster adequate services and fair competition, as well as create a stable market and potential profits. Thus, correct TSC information can help market operators determine fair Locational prices, and coordinate and manage transactions by generating proper feedback signals to encourage market participants to make competitive and profitable market decisions that at the same time allow to maintain system security [Alvarado et al., 1991, Kaye et al., 1995, Rajaraman et al., 1997, Chen, 2002].

Determining the costs associated with system security has been of great interest in power systems, especially under the framework of competitive elec-

tricity markets [Strbac et al., 1998, Moya, 1997, Jayantilal and Strbac, 1999, Overbye et al., 2000]. In most of these references, Lagrange multipliers generated during optimization procedures are used to analyze the different cost components of power system operation and determine the LMPs, based on spot pricing techniques. In centralized and hybrid markets, these methodologies can be readily applied as these markets are based on optimization procedures. Thus, by introducing inequalities constraints in the optimization processes to represent system security, the Lagrange multipliers are used to determine the TSC and associated prices [Xie et al., 2000, Cañizares et al., 2001]. However, in decentralized markets, locational prices that account for system security costs cannot be obtained as a byproduct of the auction process on which these markets are based, given the simple mechanisms used to obtain a clearing price; in this case, system security can only be introduced in the market solution process using iterative techniques [Sheblé, 1999]. Hence, the present paper concentrates on developing techniques to introduce security costs in decentralized market structures, so that locational prices that account for the TSC can be generated based on a rescheduling technique somewhat similar to the one described in [Gan and Chen, 2001].

In all market structures, rather conservative limits on the transmission system power flows and bus voltage magnitudes are typically used to somewhat represent system security; these limits are typically determined through off-line studies by making fairly conservative assumptions to account for operating uncertainties. When some of these limits are reached, the system is considered to have a transmission congestion problem, and hence operating and pricing signals are generated to ensure the operational feasibility of the proposed transactions. However, representing system security through the use of these limits may lead to incorrect price signals and may even compromise system security, as these limits most likely do not reflect the security margins for the actual operating conditions. Hence, in the current paper, an on-line technique that accounts for voltage stability constraints as well as thermal and bus voltage limits is used to define and compute a System Security Index (SSI), and thus properly evaluate the transmission system congestion. The proposed SSI computation methodology also generates a series of sensitivity factors that are used here to define Nodal Congestion Prices (NCPs) that account for the TSC.

The paper is structured as follows: In Section II, the basic concepts behind the computation of the proposed SSI and associated sensitivity factors are presented and discussed. A rescheduling technique is presented in Section

III for the determination of the proposed NCPs. In Section IV, the results of applying the proposed methodologies to a 3-area test system, a 6-bus test system with inelastic demand and demand-side bidding, and a 129-bus model of the Italian system with supply and demand bids are used to illustrate the proposed NCP calculation. The advantages and disadvantages of this technique are highlighted in this section in comparison to a standard OPF-based analysis, since the proposed transmission congestion management and pricing technique is an iterative procedure that could be basically considered a sub-optimal solution to a security constrained market auction. Finally, Section V discusses the main contributions of this paper and possible future research directions.

2 System Security Index and Sensitivity Computations

The pricing methodology presented in this paper is basically an implementation of a simple auction market where SSI computations and sensitivity analyses, which are based on voltage stability constraints as well as thermal and bus voltage limits, and carried out for the given bidding conditions, are proposed to determine nodal prices that reflect TSCs. The methodology presented here is based on sensitivity formulas developed for the stability limit conditions. Hence, this section concentrates on describing the techniques used for the proposed SSI and sensitivity calculations.

2.1 SSI Calculations

A power system can be represented in steady state with the following set of nonlinear equations:

$$f(x, \lambda, p) = 0 \quad (1)$$

where $x \in \mathfrak{R}^n$ stands for the state and algebraic system variables, such as bus voltage magnitudes and angles; $\lambda \in \mathfrak{R}$ is a loading parameter used to represent the system loading margin, as the load powers are modeled as

$$P_L = P_{L_o} + \lambda P_D \quad (2)$$

with P_{L_o} representing the power levels of loads that *do not* directly bid in the market (e.g. “non-dispatchable” loads in the Ontario market [IMO, 2000])

and hence define the initial loading conditions, and P_D corresponding to the demand power bids; all loads are assumed to have constant power factors. In this analysis, generator powers are modeled as

$$P_G = P_{G_o} + (\lambda + k_G)P_S \quad (3)$$

where P_{G_o} stands for the generator power levels that *do not* directly bid in the market (e.g. “must-run” generators in the Ontario market [IMO, 2000]), and k_G is a variable used to represent a distributed slack bus. The parameters $p \in \mathfrak{R}^m$ represent “controllable” market or system parameters, such as the supply and demand power bids P_S and P_D , respectively. Equations (1) typically correspond to a set of “modified” power flow equations, which basically result from modeling system controls and limits in greater detail than in the typical power flow equations [Cañizares, 2002].

The voltage stability limits for the system represented by equations (1) are basically associated with saddle-node and limit-induced bifurcations of the corresponding set of nonlinear equations [Cañizares, 2002]; at these bifurcation points, the system collapses. Thermal and voltage limits, on the other hand, can be treated mathematically, for the purpose of sensitivity analyses, in a similar way as limit-induced bifurcations, although the system does not collapse when these limits are reached. Hence, the SSI is defined as

$$\text{SSI} = \lambda_c \quad (4)$$

where λ_c represents the “critical” (maximum) loading parameter at which the system is at a limit condition due to voltage stability, thermal or bus voltage constraints for a worst contingency scenario. This index is defined in this way to try to capture the main characteristics of transmission congestion.

2.2 Sensitivity Formulas

Since voltage stability constraints as well as thermal and voltage limits are used to determine the SSI value, one can also readily determine the sensitivities of the SSI with respect to various system parameters, especially with respect to the participants’ bids, i.e.

$$\frac{d\text{SSI}}{dp} = \frac{d\lambda_c}{dp} \quad (5)$$

The required sensitivity formulas can be obtained from the use of basic voltage stability concepts [Cañizares, 2002].

2.2.1 Saddle-Node Bifurcations

Saddle-node bifurcations (SNB) are characterized by a pair of equilibrium points coalescing and disappearing as the parameter λ “slowly” changes. Mathematically, the SNB point is an equilibrium point (x_c, λ_c, p_c) with a singular Jacobian $D_x f|_c$ and associated unique right and left “singular” eigenvectors v and w , respectively, i.e. $D_x f|_c v = D_x^T f|_c w = 0$.

By taking the derivatives of (1), one has at the SNB point that

$$\begin{aligned} D_x f|_c dx + D_\lambda f|_c d\lambda + D_p f|_c dp &= 0 \\ \Rightarrow w^T D_x f|_c dx + w^T D_\lambda f|_c d\lambda + w^T D_p f|_c dp &= 0 \end{aligned}$$

Hence, from these equations and as proposed in [Greene et al., 1997], one has that the sensitivities of SSI with respect to changes in the parameters p at the SNB point can be determined by using

$$\frac{dSSI}{dp} = -\frac{1}{\omega^T D_\lambda f|_c} \omega^T D_p f|_c \quad (6)$$

2.2.2 Limits

Limit-induced bifurcations (LIB) are equilibrium points where a system control limit is reached, which in *some* cases may lead to a system collapse characterized by a pair equilibrium points coalescing and disappearing for slow changes of the parameter λ . At a LIB, as opposed to a SNB, the system Jacobian is not singular at the bifurcation point (x_c, λ_c, p_c) ; hence, equation (6) does not directly apply at this point. Furthermore, sensitivities of system limits that are not necessarily associated with stability problems but are rather the result of equipment limitations, such as thermal limits on transmission lines, cannot be studied using (6) either.

In general, a system reaching any particular limit at an equilibrium point (x_c, λ_c, p_c) , such as a bus voltage, thermal or reactive power limit, can be characterized by two different sets of equations, i.e.

$$\begin{aligned} f_1(x_c, \lambda_c, p_c) &= 0 \\ f_2(x_c, \lambda_c, p_c) &= 0 \end{aligned} \quad (7)$$

where the first set $f_1(\cdot)$ corresponds to the “original” system equations, whereas the second set $f_2(\cdot)$ corresponds to a modified set of equations where the limit is active. For example, when a reactive power generator limit is

reached at a bus i , a generator voltage control equation, say $V_i - V_{i_c} = 0$, may be replaced by $Q_{G_i} - Q_{G_{lim}} = 0$ at the limit condition. Hence, taking the derivatives of (7) at the equilibrium point where the limit becomes active,

$$D_x f_1|_c dx + D_\lambda f_1|_c d\lambda + D_p f_1|_c dp = 0 \quad (8)$$

$$D_x f_2|_c dx + D_\lambda f_2|_c d\lambda + D_p f_2|_c dp = 0 \quad (9)$$

Eliminating dx from these equations, leads to

$$\frac{dSSI}{dp} = \frac{1}{\mu^T \mu} \mu^T (D_x f_2|_c D_x f_1|_c^{-1} D_p f_1|_c - D_p f_2|_c) \quad (10)$$

where

$$\mu = D_\lambda f_2|_c - D_x f_2|_c D_x f_1|_c^{-1} D_\lambda f_1|_c$$

Observe that the sensitivity formula (10), which can be shown to be equivalent to a formula proposed in [Greene et al., 2002], applies to any limit condition, independent of whether it corresponds to a LIB or a thermal or voltage limit. Hence, equation (10) together with (6) are used to determine the sensitivity of SSI with respect to the system parameters p , which for the purpose of this paper correspond to the supply and demand bids P_S and P_D , respectively.

In this paper, all SSI and required sensitivity values are computed based on the results generated by UWPFLOW [Cañizares, 1999], which is a continuation power flow program capable of representing various power system elements using “detailed” steady state models.

3 Rescheduling Technique

The rescheduling technique proposed in this paper, which considers both generation redispatch and load curtailment, follows similar general criteria as the one discussed in [Gan and Chen, 2001], where rescheduling is used to address the issue of a simple auction mechanism that yields a market clearing condition that violates certain congestion criteria, as defined by power flow limits on the transmission system. The costs resulting from dispatching a participating unit (non-bidding units are not considered), which might be more expensive than the market clearing price (MCP), or curtailing loads to solve the congestion problem are then “distributed” among the different participants. The idea here is to redispatch units or curtail load based only

on the effect that these have on transmission system congestion, without too much regard for costs, as at this point system security takes precedence over economic considerations, especially in view that, in most markets, bidding results can be rejected based on security criteria. Observe that by choosing the units or loads based on this criterion, there will be minimum impact on the desired transactions, thus probably reducing the costs associated with achieving the required security criteria, as demonstrated in one of the examples in Section IV.

The main improvements of the technique proposed here with respect to known methodologies are:

- Thermal, bus voltage and voltage stability limits are all accurately considered to compute the SSI, which is used to represent system security, and thus evaluate transmission congestion.
- The congestion costs are distributed among the market participants based on the actual impact that each one of them has on the SSI value.
- Nodal Congestion Prices (NCP) are calculated using the sensitivities of the SSI with respect to the generator and load bids. Thus, the method presented here could be considered as a sub-optimal way of determining congestion prices, with the advantage that contingencies can be directly considered in the SSI computations, which so far is not feasible with OPF-based techniques.

The suggested rescheduling technique to address the problem of market clearing conditions that do not meet the actual SSI requirements, as defined in the previous section, is summarized in the flow-diagram shown in Figure 1. The depicted methodology is based on a series of linearizations; however, the SSI does change nonlinearly as the system parameters change due to the highly nonlinear behavior of the system. The latter is the main reason for using an iterative process. The proposed technique determines the transaction costs for the different market participants as follows:

3.1 MCP Computation

Using a simple auction mechanism, the MCP and associated total transaction power level T are determined, together with the load and generator power levels that clear the market, namely, P_D and P_G for all loads and generators,

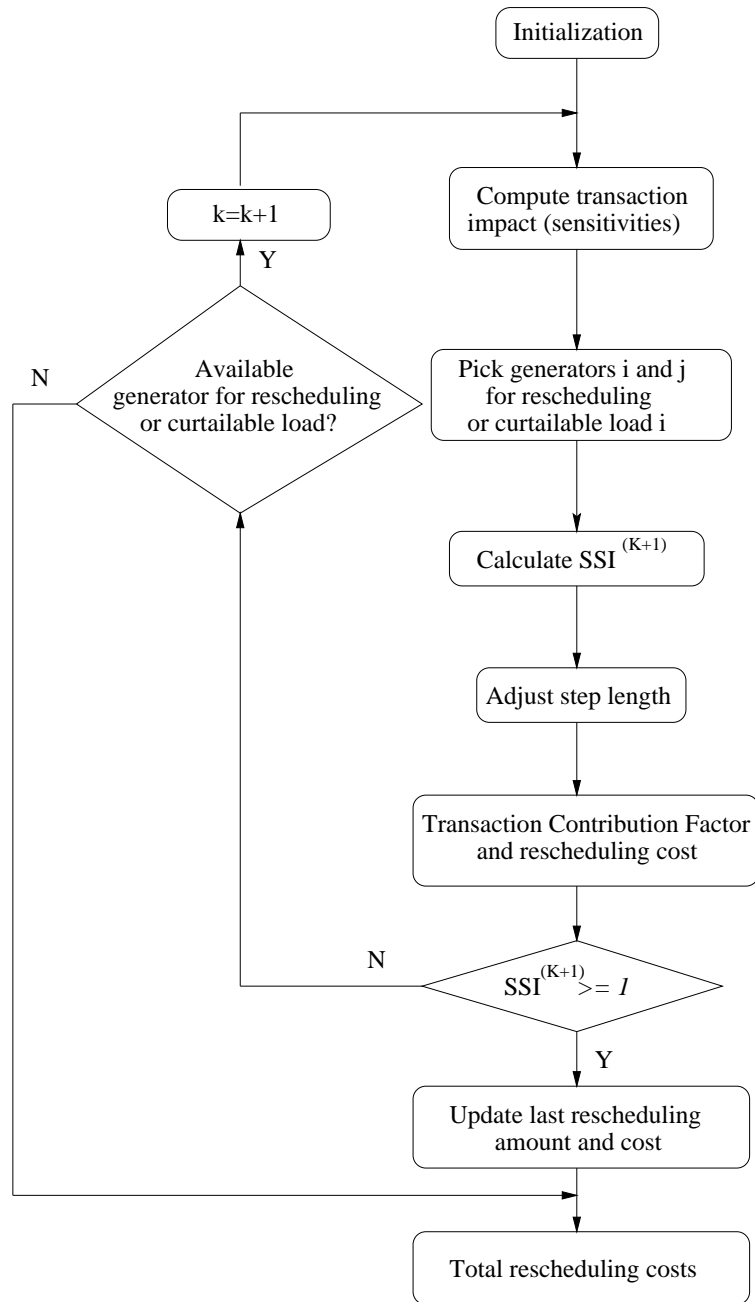


Figure 1: Rescheduling technique for a simple auction system.

respectively. The values of P_D and P_S are used in the determination of the SSI, as these define the load and generator direction used for the computation of λ_c in UWPFLOW [Cañizares, 1999].

3.2 Transaction Impact and Rescheduling

If the SSI requirement is not met, i.e. if $SSI < 1$, the impact of each possible system transaction is determined using (6) or (10), depending on the limiting factor that defines the SSI. Thus, the generator i with the most positive impact on the SSI that has not been fully dispatched in the bidding process, and the generator j dispatched in the market clearing process with the most negative or least positive impact on the SSI are chosen for rescheduling. Thus, the corresponding increase and decrease in generation is defined as

$$\Delta P_{S_i}^{(k)} = -\Delta P_{S_j}^{(k)} = \Delta P_S^{(k)}$$

where k is the number of iteration in the redispatch process, and $\Delta P_S^{(k)}$ is chosen depending on the value that one wants for the SSI, since the new value of the SSI may be approximated using

$$SSI^{(k+1)} \approx SSI^{(k)} + \frac{dSSI^{(k)}}{dP_{S_i}} \Delta P_{S_i}^{(k)} + \frac{dSSI^{(k)}}{dP_{S_j}} \Delta P_{S_j}^{(k)} \quad (11)$$

Observe that since $dSSI/dP_{S_i}^{(k)} > dSSI/dP_{S_j}^{(k)}$, this particular generation redispatch clearly results in a SSI improvement.

Since the whole process is based on a linearization, one cannot make large changes in generated power, otherwise this might have a large effect on the actual SSI value, which changes nonlinearly as the parameters change; hence the need for an iterative process. The amount of generation chosen for redispatch $\Delta P_S^{(k)}$ may be readjusted when determining the actual value of $SSI^{(k+1)}$ using the full nonlinear system.

Only if there are no adequate generators available for redispatch, is the load considered for curtailment. This approach is to be expected when the load is inelastic, as these types of loads require that the forecasted load be dispatched, given the high “costs” of load curtailment. In the case of elastic demand associated with demand-side bidding or loads with curtailment bids, however, the load could be considered for rescheduling in the same way as the generators, i.e. the load with the most negative impact on the SSI, say

i , may be reduced by an amount that has a “significant” impact on the SSI value, as per approximation

$$\text{SSI}^{(k+1)} \approx \text{SSI}^{(k)} - \left. \frac{d\text{SSI}}{dP_{D_i}} \right|_c^{(k)} \Delta P_{D_i}^{(k)} \quad (12)$$

Observe that in the case of demand-side bidding, one may assume that there is no security cost for load curtailment, since the loads are intrinsically running a risk of not being dispatched by participating in the market. However, this means that overall system revenues are lost, as loads that could be served by redispatching available generation would not be dispatched, even if these loads were willing to pay the higher costs of rescheduling generated by the proposed market process. This can be also observed in OPF-based market models.

When loads are rescheduled, the transaction level T is affected by the load reduction; thus,

$$T^{(k+1)} = T^{(k)} - \Delta P_{D_i}^{(k)}$$

Furthermore, generator power bids must be reduced in this case to compensate for the reduction in demand. This reduction of excess power generation will depend on the particular market rules. Here, we assume a reduction that considers the original generator’s power bid, the amount to be rescheduled from previous iterations, as well as the transaction level; thus,

$$\Delta P_{S_i}^{(k)} = \Delta P_{D_i}^{(k)} \frac{P_{S_i}^{(0)} - \sum_{j=1}^{k-1} \Delta P_{S_i}^{(j)}}{T^{(k)}}$$

This could be considered a reasonable and fair mechanism to share the load curtailment; however, other mechanisms could be readily implemented, such as rescheduling the load reduction among the participating generators based on their SSI sensitivities.

3.3 Rescheduling Adjustment

The step changes in generation or load are readjusted by computing the actual value of $\text{SSI}^{(k+1)}$ and comparing it to the approximated value computed using (11) or (12). If the difference is greater than a chosen tolerance, the previous step and this one are repeated with smaller changes in the supply and demand until a desired tolerance is met. This step is required to account for the system nonlinearities.

3.4 Rescheduling Pricing

Based on the definitions of P_{G_o} and P_{L_o} , we will assume that the security cost incurred by potential transactions will not be distributed among these “must-run” generators and “must-serve” loads, as their prices are determined by different market mechanisms (e.g. Must-run Contracts and averaging market prices in the Ontario market [IMO, 2000]). Under this assumption, the rescheduling costs for the given iteration k are determined based on a Transaction Contribution Factor (TCF) as defined by

$$\text{TCF}_i^{(k)} = \frac{dSSI/dp_i^{(k)} p_i^{(k)}}{\sum_j dSSI/dp_j^{(k)} p_j^{(k)}} \quad (13)$$

where i stands for the bus number, and $p_i^{(k)}$ corresponds to the value of the corresponding parameter, i.e. the value of $P_{S_i}^{(k)}$ or $P_{D_i}^{(k)}$. Only buses with negative impact on the SSI, i.e. buses with $dSSI/dp_i^{(k)} < 0$, are considered in this computation; buses with positive impact are given a zero TCF value, so that market participants that do not create the security problem are not charged for the cost of keeping the system secure (OPF-based techniques, as shown in the examples discussed in Section IV, may yield “negative” congestion prices). The parameter values $p_i^{(k)}$ are included in this “normalization” process to account for the “size” of the corresponding transactions in the security cost.

The total generator redispatch security cost of the k^{th} iteration may be defined as

$$\text{SC}_k = (C_{S_i} - \text{MCP}) \Delta P_{S_i}^{(k)} \quad (14)$$

where i is the generator chosen as per Section 3.2, with bid C_{S_i} , and MCP is the market clearing price obtained from the simple bidding process. In the case of non-curtailable loads or inelastic loads, one can assume that there is a bid or a high cost associated with curtailing the load that should be considered as part of the cost of keeping the system secure; thus, one would have in this case that

$$\text{SC}_k = A_{D_i} \Delta P_{D_i}^{(k)} \quad (15)$$

where A_{D_i} is the “cost” of curtailing the load at the chosen bus i , which could be negotiated (e.g. bidding, contracts) or “imposed”, making the load elastic. Observe that the full SC_k amount in this case should be given back to the curtailed load to compensate it for the “forced” reduction in demand.

3.5 Convergence Check and Final Rescheduling Adjustment

If the SSI requirements are met, i.e. if $SSI^{(k+1)} > 1$, then the iterative process stops, say at $k = m$. At this point, the final generator or load reschedules are adjusted based on (11) or (12), respectively. Thus,

$$\Delta P_{S_i}^{(m)} = -\Delta P_{S_j}^{(m)} = \frac{1 - SSI^{(m)}}{dSSI/dP_{S_i}^{(m)} - dSSI/dP_{S_j}^{(m)}}$$

or

$$\Delta P_{D_i}^{(m)} = \frac{1 - SSI^{(m)}}{dSSI/dP_{D_i}^{(m)}}$$

3.6 Computation of Nodal Congestion Prices (NCP)

The final transaction levels and NCP for each i node are readily determined as follows:

- Generators:

$$P_{S_i} = P_{S_i}^{(0)} + \sum_{k=1}^m \Delta P_{S_i}^{(k)} \quad (16)$$

$$NCP_{S_i} = \frac{1}{P_{S_i}} \sum_{k=1}^m TCF_i^{(k)} SC_k$$

- Loads:

$$P_{D_i} = P_{D_i}^{(0)} - \sum_{k=1}^m \Delta P_{D_i}^{(k)}$$

$$NCP_{D_i} = \frac{1}{P_{D_i}} \sum_{k=1}^m TCF_i^{(k)} SC_k$$

It is important to highlight the fact that the proposed technique to compute NCP assumes that all the costs of rescheduling are fully distributed among the market participants, as in [Gan and Chen, 2001]. This is not the case in OPF-based methodologies, as shown in the next section, as the total congestion price paid by the loads is greater than what generators are paid, with the difference being kept by the market operator.

Table 1: GENCO and ESCO Bids for 6-bus test system

Bus i	Participant	C_i [\$/MWh]	P_{\max} [MW]
1	GENCO 1 (S_1)	9.7	20
2	GENCO 2 (S_2)	8.8	25
3	GENCO 3 (S_3)	7	20
4	ESCO 1 (D_1)	12	25
5	ESCO 2 (D_2)	10.5	10
6	ESCO 3 (D_3)	9.5	20

4 Examples

In this section, the proposed technique is applied to two test systems, namely, a 6-bus system, and a realistic 129-bus system model of the Italian High Voltage network.

The results obtained with the proposed rescheduling technique are compared to similar results obtained with the standard OPF-based methodology described in the Appendix. Although the results cannot be compared on a bus-by-bus basis, since the two methodologies are essentially different, total transaction levels and security costs obtained from each technique are used here to give the reader a general idea of both benefits and disadvantages of the proposed rescheduling procedure. The results obtained with the proposed technique are also compared with a cost-based rescheduling to show some additional advantages of the proposed technique.

4.1 Six-bus Test System

The proposed technique is tested on the 6-bus test system of Figure 2 [Sheblé, 1999], with 3 generation companies (GENCOs) that provide supply bids, and three energy supply companies (ESCOs) that provide demand bids, as shown in Table 1. All system data, extracted from [Sheblé, 1999], are shown in Tables 2 and 3 to facilitate the duplication of the results presented here. In Table 3, the maximum power flows in the lines obtained from off-line N-1 contingency studies are also shown; these values are *not* used for the proposed rescheduling technique, only for OPF-based computations used here for comparison purposes. The bus voltage and thermal limits used in this example are also shown in Tables 2 and 3.

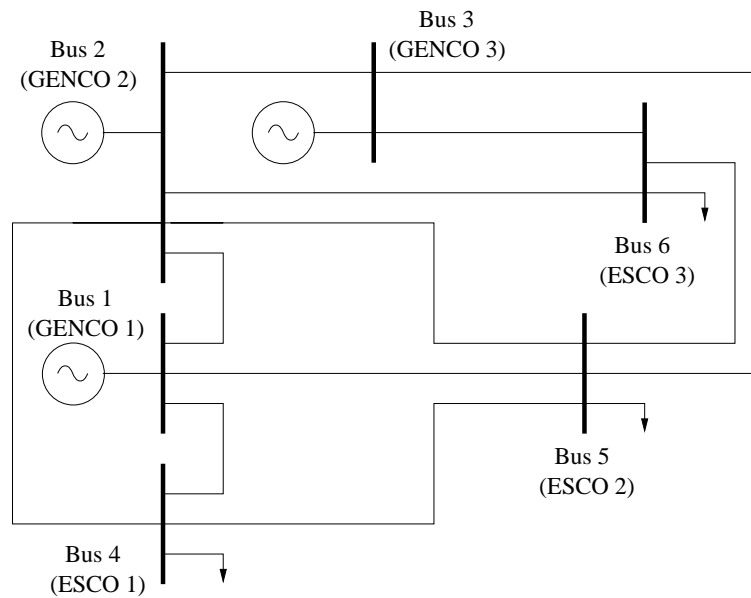


Figure 2: 6-bus test system.

Table 2: Bus Data at Base Loading for 6-bus test system

Bus i	V_0 [p.u.]	P_{Lo} [MW]	Q_{Lo} [MVar]	P_{Go} [MW]	Q_{Glim} [MVar]	V_{max} [p.u.]	V_{min} [p.u.]
1	1.05	0	0	90	± 150	1.1	0.9
2	1.05	0	0	140	± 150	1.1	0.9
3	1.05	0	0	60	± 150	1.1	0.9
4	0.986	90	60	0	0	1.1	0.9
5	0.969	100	70	0	0	1.1	0.9
6	0.991	90	60	0	0	1.1	0.9

Table 3: Line Data for 6-bus test system

Line $i-j$	R_{ij} [p.u.]	X_{ij} [p.u.]	$B_i/2$ [p.u.]	I_{ij}^{max} [A]	P_{ij}^{max} [MW]
1-2	0.1	0.2	0.02	1500	30
1-4	0.05	0.2	0.02	1500	60
1-5	0.08	0.3	0.03	1500	53
2-3	0.05	0.25	0.03	1500	30
2-4	0.05	0.1	0.01	1500	76
2-5	0.1	0.3	0.02	1500	35
2-6	0.07	0.2	0.025	1500	60
3-5	0.12	0.26	0.025	1500	30
3-6	0.02	0.1	0.01	1500	60
4-5	0.2	0.4	0.04	1500	15
5-6	0.1	0.3	0.03	1500	12

4.1.1 Simple Auction Results

A simple auction mechanism assuming demand-side bidding yields the results depicted in Figure 3. The maximum loading value of the system in this case is 175.60 MW, which is associated with a minimum bus voltage limit. The SSI is 0.8496, and corresponds to a minimum bus voltage limit for the worst contingency (Line 2-4 out). Since $SSI < 1$, the rescheduling technique is needed to make the transaction feasible.

For inelastic demand, the total load must be served, i.e. the transaction level is $T = 55$ MW. The simple auction results for this case are depicted in Figure 4. This load and generation pattern yields a maximum loading condition 219.19 MW, corresponding to a minimum bus voltage limit, and an SSI of 0.8135, corresponding to a minimum bus voltage limit for the worst contingency (Line 3-6 out), i.e. $SSI < 1$, requiring as well of the rescheduling strategy to make the proposed transaction feasible.

4.1.2 Rescheduling Results

The rescheduling procedure of Figure 1 yields the results depicted on Tables 4 and 5 for the case of demand-side bidding. This procedure is based on the sensitivity vector $dSSI/dp^{(k)}$, as previously explained; for example, at the initial iteration $k = 1$, (10) yields

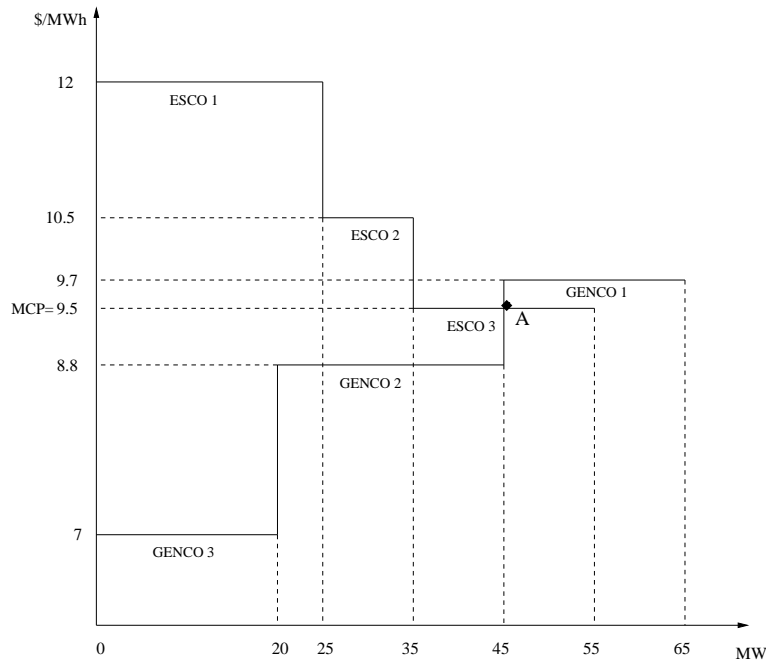


Figure 3: Simple auction for 6-bus test system with demand-side bidding.

Table 4: Rescheduling and Security Costs for Elastic Demand, 6-bus test system

k	$\Delta P_{G_1}^{(k)}$ [MW]	$\Delta P_{G_2}^{(k)}$ [MW]	$SSI^{(k)}$	SC_k [\$/h]
1	5	-5	0.9009	1.00
2	5	-5	0.9564	1.00
3	3.79	-3.79	1.0	0.758

Table 5: TCFs for Elastic Demand, 6-bus test system

k	1	2	3
$TCF_1^{(k)}$	0	0	0
$TCF_2^{(k)}$	0.0268	0.0607	0.0792
$TCF_3^{(k)}$	0	0.0324	0.0801
$TCF_4^{(k)}$	0.8423	0.8198	0.7734
$TCF_5^{(k)}$	0.1073	0.087	0.0673
$TCF_6^{(k)}$	0.0236	0	0

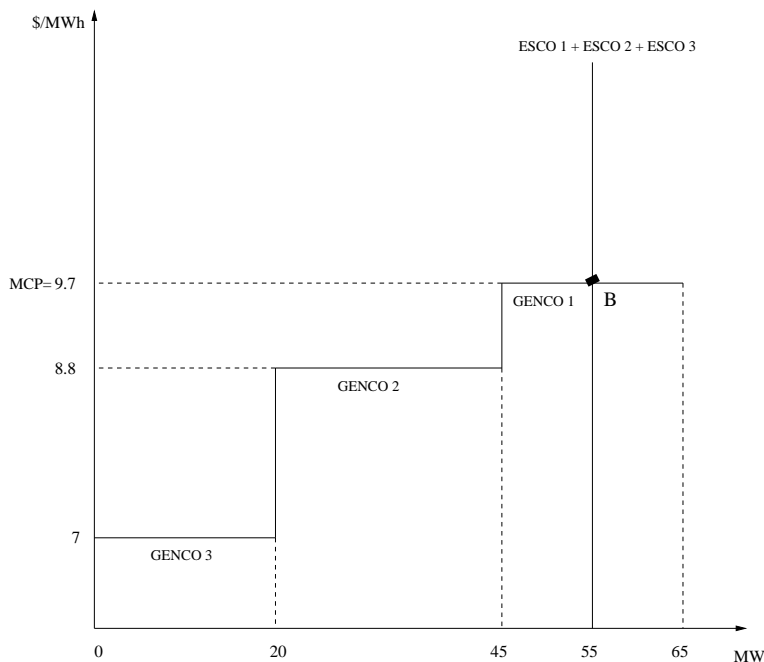


Figure 4: Simple auction for 6-bus test system with inelastic demand.

$$\frac{dSSI^{(1)}}{dp} = \begin{bmatrix} dSSI/dP_{S_1}^{(1)} \\ dSSI/dP_{S_2}^{(1)} \\ dSSI/dP_{S_3}^{(1)} \\ dSSI/dP_{D_1}^{(1)} \\ dSSI/dP_{D_2}^{(1)} \\ dSSI/dP_{D_3}^{(1)} \end{bmatrix} = \begin{bmatrix} 0.94 \\ -0.05 \\ 0.02 \\ -1.57 \\ -0.5 \\ -0.11 \end{bmatrix} \quad (17)$$

which shows that GENCO 1 has the most positive impact on system security. Observe in (17) that curtailing ESCO 1 is more efficient for improving system security than rescheduling generation, which is typically the case.

Table 6 shows the final results of the proposed rescheduling procedure in the case of demand-side bidding. Table 7, on the other hand, depicts the results obtained by means of a standard OPF-based technique [Xie et al., 2000, Finney et al., 1997], which is briefly explained in the Appendix; the negative NCPs in this table indicate that the corresponding market participants are being paid. Thus, using the OPF-based NCPs, the total security costs paid

Table 6: Simple Auction with Rescheduling for Elastic Demand, 6-bus test system

Bus i	Part.	V [p.u.]	NCP [\$/MWh]	P_S or P_D [MW]
1	S_1	1.05	0.0	15.14
2	S_2	1.05	0.0129	11.9
3	S_3	1.05	0.005	21.63
4	D_1	0.966	0.0917	25.00
5	D_2	0.956	0.0246	10.00
6	D_3	0.984	0.002	10.00

Table 7: OPF-based Results for Elastic Demand, 6-bus test system

Bus i	Part.	V [p.u.]	NCP [\$/MWh]	P_S or P_D [MW]
1	S_1	1.1	-0.8675	9.49
2	S_2	1.1	0.0	3.58
3	S_3	1.1	-0.0874	20.00
4	D_1	1.0224	2.2347	25.00
5	D_2	1.0177	1.0185	4.68
6	D_3	1.0431	0.3450	2.29

to the generators in this case is 9.98 \$/h (the sum of $NCP \times P_S$), as opposed to the total security costs of 2.8 \$/h obtained using the proposed rescheduling technique, which is fully distributed among market participants. Loads, on the other hand, pay a total of 61.42 \$/h (the sum of $NCP \times P_D$) for congestion in the OPF-based method, with the difference $61.42 - 9.28 = 52.14$ \$/h going to the market operator (although there is the argument that the difference between what loads paid and generators receive could be used for transmission system upgrades, the actual use of these monies is a point of contention in electricity market design). Furthermore, the total transaction level of the OPF-based solution is $T = 31.97$ MW, which is lower than the $T = 45$ MW value obtained with the proposed rescheduling method. These results show that the rescheduling technique produces, in general, better market conditions than a standard OPF-based methodology, since the overall security costs are lower while the transaction levels are higher, mainly due to the improper representation of system security through the use of line power limits computed off-line in the OPF-based technique, as previously discussed.

If a cost-based method is used, i.e. the cheapest generator which has

Table 8: Simple Auction with Rescheduling for Inelastic Demand, 6-bus test system

Bus i	Participant	V [p.u.]	NCP [\$/MWh]	P_S or P_D [MW]
1	S_1	1.05	0.6726	18.99
2	S_2	1.05	0.0	23.73
3	S_3	1.05	1.501	9.49
4	D_1	0.9663	1.2597	25.00
5	D_2	0.9555	1.4345	10.00
6	D_3	0.9812	4.6284	13.00

Table 9: Curtailment Bids for Inelastic Demand, 6-bus test system

Bus i	Participant	A_{D_i} [\$/MWh]	P_{\max} [MW]
4	ESCO 1 (D_1)	24	25
5	ESCO 2 (D_2)	21	10
6	ESCO 3 (D_3)	19	20

not yet been fully dispatched is first chosen to be constrained-on, while the most expensive generator on the market is chosen to be constrained-off, the rescheduling results are the same as that of the proposed rescheduling method for this specific case. This is due to the fact that GENCO 1 is the only generator which is available to be constrained-on, and GENCO 2 is the most expensive generator on the market and has the most negative impact on system security.

A similar procedure for the case of inelastic demand yields the results depicted on Table 8, which shows the NCP resulting from generator redispatching *and* load curtailment, as there are not enough power supply bids to solve the congestion problem. Thus, in this case, demand curtailment was considered assuming the costs or “bids” depicted in Table 9. Observe the large NCPs due to the relatively large load curtailment costs. In this case, comparisons are not possible with the standard OPF-based methodology, since this particular technique is not designed to properly handle load curtailment bids/costs.

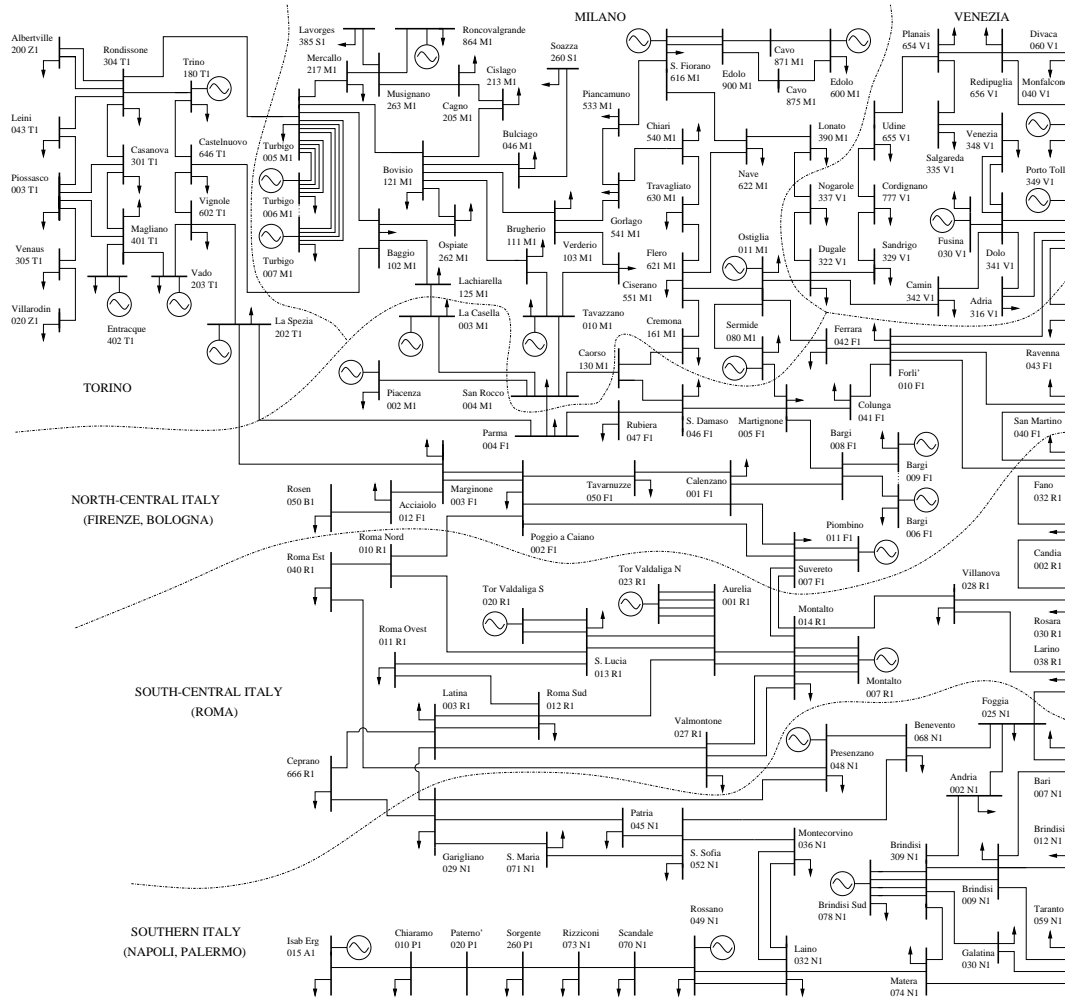


Figure 5: Italian HV transmission system, 129-bus model.

Table 10: Simple Auction with Rescheduling for 129-bus Italian system model

k	i	j	SSI ^(k)	$\Delta P_s^{(k)}$ [MW]	SC _{k} [\$/h]
1	12	13	0.92098	10	4.40
2	6	13	0.93026	10	35.60
3	8	13	0.94864	10	8.00
4	6	13	0.96939	10	35.60
5	8	13	0.97846	10	8.00
6	6	13	0.99908	10	35.60
7	8	13	1.0	0.44	0.35

4.2 129-bus Italian HV Transmission System

A 129-bus model of the Italian 400 KV transmission system is depicted in Figure 5; this system is used to test the proposed technique in a more realistic environment. In this model, 32 generators and 82 consumers are assumed to participate in the market auction. All bids are in the 30 to 40 US\$/MWh range, based on the actual operating costs of thermal plants and the average prices over the last few years in other European countries where electricity markets are currently in operation. Fixed generation P_{G_o} and fixed loads P_{L_o} were assumed to be about 80 % of the average power level for a typical working day, based on the fact that most of the generation and load is still directly or indirectly owned by the state-owned utility company ENEL. The power bids are chosen to be about 30 % of the average consumption to force transmission congestion. All system data and most of the security constraints, i.e. voltage limits, generation reactive power limits and transmission line thermal limits, were provided by CESI, the Italian electrical research center. The power flow limits in transmission lines used *only* in a standard OPF-based market computations, which are utilized here for comparison purposes, were computed off-line based on the assumed power bids and through an N-1 contingency analysis.

The bid matching yields the total potential transaction level $T = 3822.49$ MW, while the SSI is determined to be 0.9001; therefore, rescheduling is needed. The results of this process are shown in Table 10; the total rescheduling amount is 60.44 MW, and the total security costs are 127.55 \$/h. The NCPs at some relevant nodes are shown in Figure 6.

Figure 7 depicts, for the same buses shown in Figure 6, the NCPs obtained by means of a standard OPF-based method. In this case, the total

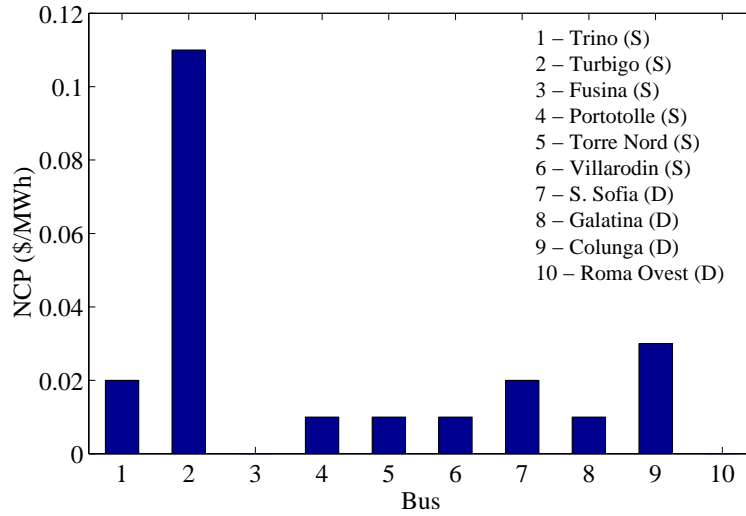


Figure 6: NCPs of some relevant buses of the Italian system model obtained with the proposed rescheduling technique.

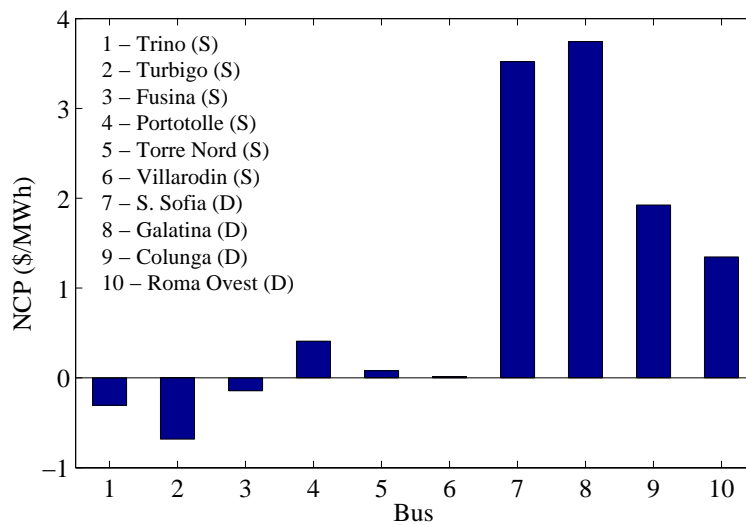


Figure 7: NCPs of some relevant buses of the Italian system model obtained with a standard OPF-based approach.

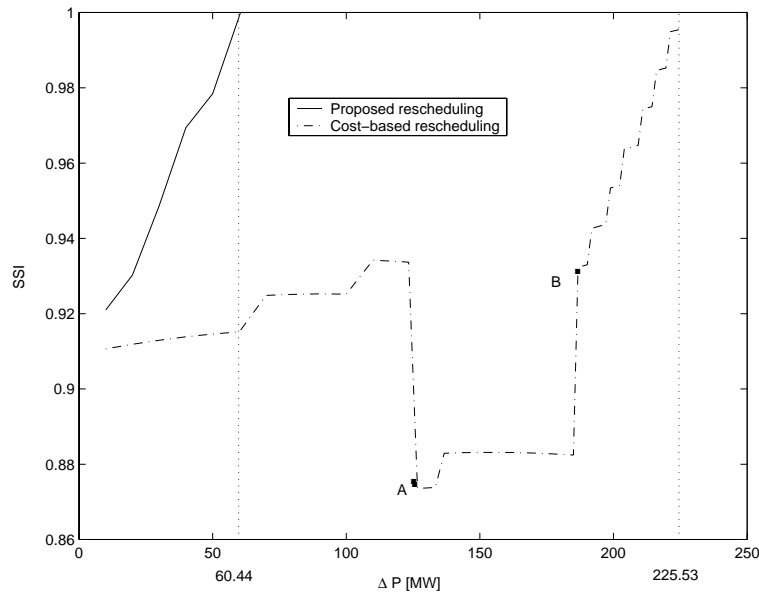


Figure 8: Generation rescheduling results for 129-bus model of Italian system.

transaction level is $T = 2639$ MW, and the total security costs paid to the generators and paid by the loads are 299.97 \$/h and 4237.10 \$/h, respectively, which in general are worse than those obtained with the proposed rescheduling technique.

If a cost-based method is used, the results are depicted with the dashed-line curve in Figure 8. The most expensive generator, La Spezia (bus 2), is first constrained-off, and the cheapest generator, Tavazzano (bus 12), is first constrained-on. At point A, generator Tavazzano reaches its maximum, and the second cheapest generator, Sermide (bus 11), is then constrained-on. At point B, the second most expensive generator, Turbigio (bus 13), is also constrained-off. The total rescheduling amount in this case is 225.53 MW, which is significantly larger than the rescheduling amount obtained with the proposed method (solid-line curve). The total security cost, on the other hand, is 119.67\$/h, which is slightly less than that obtained with the proposed method.

5 Conclusions

A rescheduling technique is proposed, described and tested to analyze, manage and price transmission congestion in a simple-auction-based electricity market. The proposed methodology is essentially an iterative generation redispatch and load curtailment technique. Transmission congestion is represented through SSI computations, based on voltage stability constraints as well as thermal and bus voltage limits. This allows for the use of certain sensitivity formulas that form the base for the proposed techniques and pricing methodologies.

The rescheduling technique proposed in this paper could be considered as a feasible and better alternative to other methodologies that have been proposed and are currently being used in simple-auction-based electricity markets to handle transmission congestion, as the full nonlinearities of the system as well as certain system stability issues are considered in the pricing process. Thus, when using the proposed technique to reach the desired transaction level, the rescheduling amount can be significantly reduced compared to a cost-based rescheduling technique. However, congestion prices might not be necessarily reduced, since the proposed technique concentrates on maximizing security rather than minimizing costs. The comparison of the results obtained for the various test systems with respect to those obtained with a standard OPF-based technique shows that proper representation of system security limits leads to better overall market conditions, i.e. lower congestion costs and higher transaction levels.

System dynamics are not fully represented in the proposed methodology, and it is an issue that still needs to be addressed. Nevertheless, congestion prices might not be observe that the proposed iterative technique could be readily adapted to integrate full dynamic SSI computations, as long as the required SSI values and sensitivities can be “quickly” determined.

6 Acknowledgments

The authors would like to thank Profs. Antonio J. Conejo and Javier Contreras from the University of Castilla-La Mancha for their valuable suggestions and comments throughout the development of this work. Thanks are also due to Dr. M. Pozzi and Mr. A. Danelli from CESI for providing the Italian system data.

A OPF-based Technique

A standard OPF-based technique was used to provide a basis for evaluating the performance of the proposed method for pricing transmission congestion. The OPF market problem is typically formulated as follows:

$$\begin{aligned}
\text{Min.} \quad & -(C_D^T P_D - C_S^T P_S) && \rightarrow \text{Social benefit} && (18) \\
\text{s.t.} \quad & f(\delta, V, Q_G, P_S, P_D) = 0 && \rightarrow \text{PF equations} \\
& 0 \leq P_S \leq P_{S_{\max}} && \rightarrow \text{Sup. bid blocks} \\
& 0 \leq P_D \leq P_{D_{\max}} && \rightarrow \text{Dem. bid blocks} \\
& |P_{ij}(\delta, V)| \leq P_{ij_{\max}} && \rightarrow \text{Power transfer lim.} \\
& |P_{ji}(\delta, V)| \leq P_{ji_{\max}} \\
& I_{ij}(\delta, V) \leq I_{ij_{\max}} && \rightarrow \text{Thermal limits} \\
& I_{ji}(\delta, V) \leq I_{ji_{\max}} \\
& Q_{G_{\min}} \leq Q_G \leq Q_{G_{\max}} && \rightarrow \text{Gen. } Q \text{ lim.} \\
& V_{\min} \leq V \leq V_{\max} && \rightarrow V \text{ "security" lim.}
\end{aligned}$$

where C_S and C_D are vectors of supply and demand bids in \$/MWh, respectively; Q_G stand for the generator reactive powers; V and δ represent the bus phasor voltages; P_{ij} and P_{ji} represent the power flowing through the lines in both directions, and are used to model system security by limiting the transmission line power flows, together with line current I_{ij} and I_{ji} thermal limits and bus voltage limits V_{\min} and V_{\max} ; and P_S and P_D represent bounded supply and demand power bids in MW. In this model, which is typically referred to as a security constrained OPF, P_{ij} and P_{ji} limits are obtained by means of off-line stability studies, considering an N-1 contingency criterion.

Using the decomposition formula for LMPs proposed in [Xie et al., 2000, Finney et al., 1997], one can define the NCPs as follows:

$$\text{NCP} = \left(\frac{\partial f^T}{\partial y} \right)^{-1} \frac{\partial h^T}{\partial y} (\mu_{\max} - \mu_{\min}) \quad (19)$$

where $y = [\delta \ V]^T$, h represents the inequality constraint functions (e.g. transmission line powers), and μ_{\max} and μ_{\min} are the dual variables or shadow prices associated with the inequality constraints. Equation (19) is a vector of active and reactive nodal congestion prices.

References

- F. Alvarado, Y. Hu, D. Ray, R. Stevenson, and E. Cashman. Engineering Foundations for the Determination of Security Costs. *IEEE Trans. Power Systems*, 6(3):1175–1182, August 1991.
- C. A. Cañizares. UWPFLOW Program, 1999. University of Waterloo, available at <http://www.power.uwaterloo.ca>.
- C. A. Cañizares. Voltage Stability Assessment: Concepts, Practices and Tools. Technical report, IEEE-PES Power System Stability Subcommittee, SP101PSS, August 2002.
- C. A. Cañizares, H. Chen, and W. Rosehart. Pricing system security in electricity markets. In *Proc. Bulk Power Systems Dynamics and Control-V*, august 2001. IREP, Onomichi, Japan.
- H. Chen. *Security Cost Analysis in Electricity Markets based on Voltage Security Criteria and Web-based Implementation*. PhD thesis, University of Waterloo, Waterloo, Canada. Available at www.power.uwaterloo.ca, 2002.
- J. D. Finney, H. A. Othman, and W. L. Rutz. Evaluating Transmission Congestion Constraints in System Planning. *IEEE Trans. Power Systems*, 12(3):1143–1150, August 1997.
- D. Gan and Q. Chen. Locational marginal pricing—new england perspective. In *Proc. IEEE/PES Winter Meeting*, january 2001. Columbus, Ohio.
- S. Greene, I. Dobson, and F. L. Alvarado. Sensitivity of the Loading Margin to Voltage Collapse With Respect to Arbitrary Parameters. *IEEE Trans. Power Systems*, 12(1):262–272, February 1997.
- S. Greene, I. Dobson, and F. L. Alvarado. Sensitivity of Transfer Capability Margins with a Fast Formula. *IEEE Trans. Power Systems*, 17(1):34–40, February 2002.
- M. Ilic, F. Galiana, and L. Fink. *Power Systems Restructuring: Engineering and Economics*. Kluwer Academic Publishers, Boston, 1998.
- IMO. Market Rules of the Ontario Electricity Market . Technical report, Independent Electricity Market Operator, 2000. Available at <http://www.theIMO.com>.

- A. Jayantilal and G. Strbac. Load Control Services in the Management of Power System Security Costs. *IEE Proc. Generation, Transmission and Distribution*, 146(3):269–275, May 1999.
- R. J. Kaye, F. F. Wu, and P. Varaiya. Pricing for System Security. *IEEE Trans. Power Systems*, 10(2):575–583, May 1995.
- M. Madrigal-Martínez. *Optimization Models and Techniques for Implementation and Pricing of Electricity Markets*. PhD thesis, University of Waterloo, Waterloo, Canada, 2000.
- O. Moya. Model for Security of Service Costing in Electric Transmission Systems. *IEE Proc.—Generation, Transmission, and Distribution*, 144(6):521–524, November 1997.
- T. J. Overbye, D. R. Hale, T. Leckey, and J. D. Weber. Assessment of transmission constraint costs: Northeast u.s. case study. In *Proc. IEEE-PES Winter Meeting*, january 2000. Singapore.
- R. Rajaraman, J. V. Sarlashkar, and F. L. Alvarado. The Effect of Demand Elasticity on Security Prices for the Poolco and Multi-Lateral Contract Models. *IEEE Trans. Power Systems*, 12(3):1177–1184, August 1997.
- F. C. Schweppe, W. C. Caramanis, R. D. Tabors, and R. E. Bohn. *Spot Pricing of Electricity*. Kluwer Academic Publisher, 1988.
- G. B. Sheblé. *Computational Auction Mechanisms for Restructured Power Industry Operation*. KluwerAcademic Publishers, USA, 1999.
- G. Strbac, S. Ahmed, D. Kirschen, and R. Allan. A Method for Computing the Value of Corrective Security. *IEEE Trans. Power Systems*, 13(3):1096–1102, August 1998.
- L. Willis, J. Finney, and G. Ramon. Computing the Cost of Unbundled Services. *IEEE Computer Applications in Power*, 9(4):16–21, October 1996.
- R. Wilson. Market Architecture. Technical report, Graduate School of Business, Stanford University, 1999.
- K. Xie, Y.-H. Song, J. Stonham, E. Yu, and G. Liu. Decomposition Model and Interior Point Methods for Optimal Spot Pricing of Electricity in

Deregulation Environments. *IEEE Trans. Power Systems*, 15(1):39–50, February 2000.